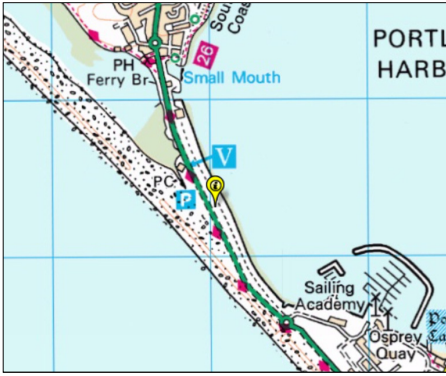
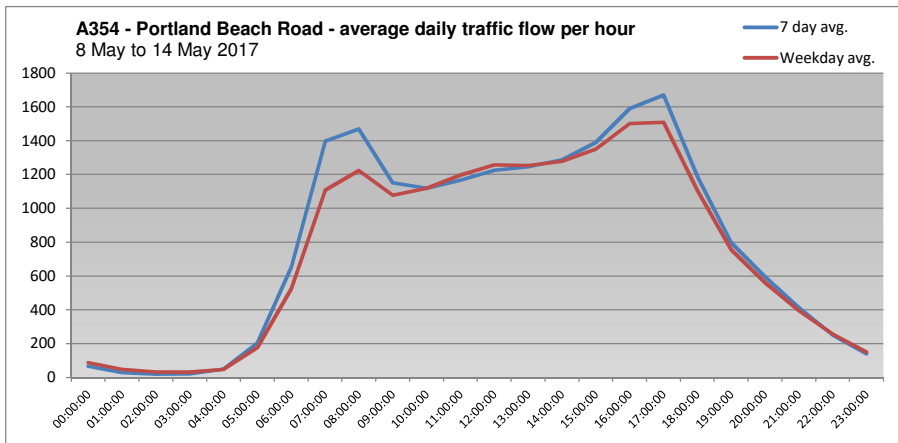


A354 - Portland Beach Road - Traffic flow survey - 8 May to 14 May 2017

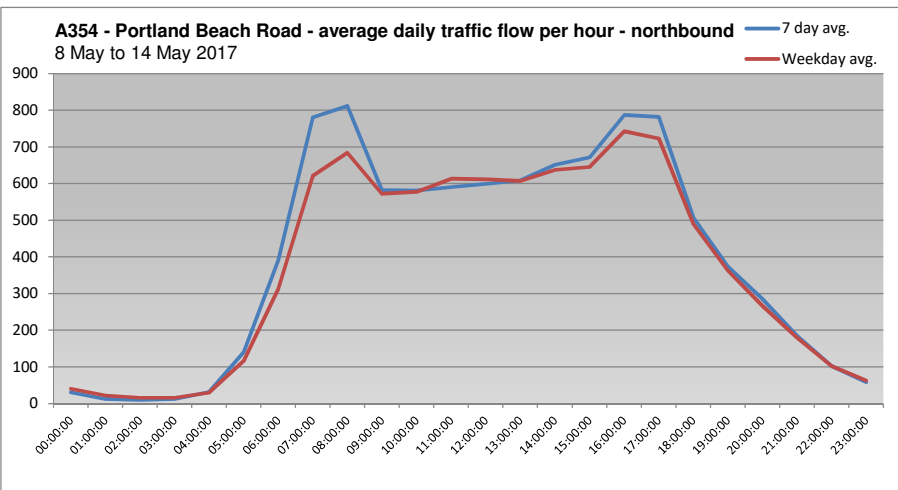


© Crown copyright 2018 OS LA100019790

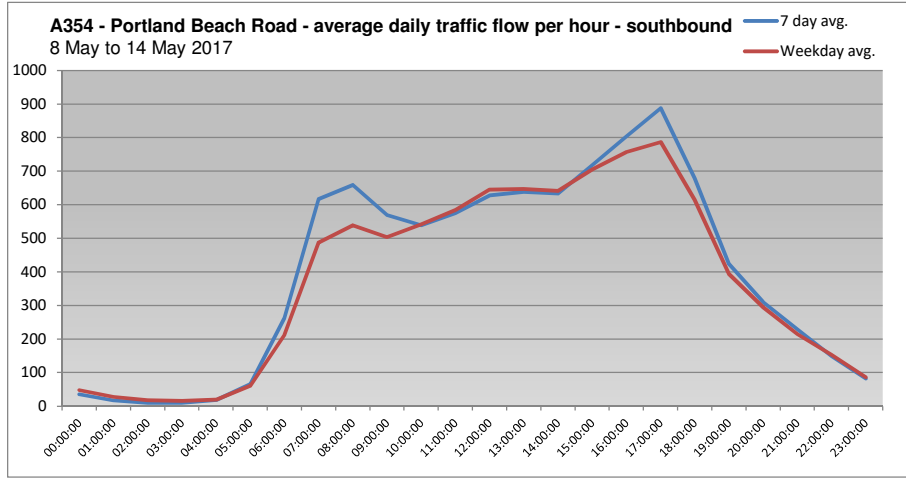
All directions		
	7 day avg.	Weekday avg.
00:00:00	68	89
01:00:00	30	49
02:00:00	20	33
03:00:00	22	32
04:00:00	51	49
05:00:00	206	178
06:00:00	655	525
07:00:00	1398	1109
08:00:00	1470	1223
09:00:00	1152	1077
10:00:00	1119	1119
11:00:00	1166	1198
12:00:00	1226	1257
13:00:00	1246	1254
14:00:00	1287	1279
15:00:00	1390	1351
16:00:00	1591	1501
17:00:00	1670	1509
18:00:00	1187	1104
19:00:00	798	757
20:00:00	596	562
21:00:00	414	395
22:00:00	252	256
23:00:00	142	150



Northbound		
	7 day avg.	Weekday avg.
00:00:00	31	41
01:00:00	13	22
02:00:00	10	16
03:00:00	13	16
04:00:00	32	30
05:00:00	140	117
06:00:00	391	313
07:00:00	781	621
08:00:00	812	684
09:00:00	582	572
10:00:00	581	578
11:00:00	591	613
12:00:00	599	612
13:00:00	609	607
14:00:00	652	638
15:00:00	672	646
16:00:00	787	743
17:00:00	782	723
18:00:00	508	490
19:00:00	374	363
20:00:00	286	267
21:00:00	185	180
22:00:00	103	103
23:00:00	59	63

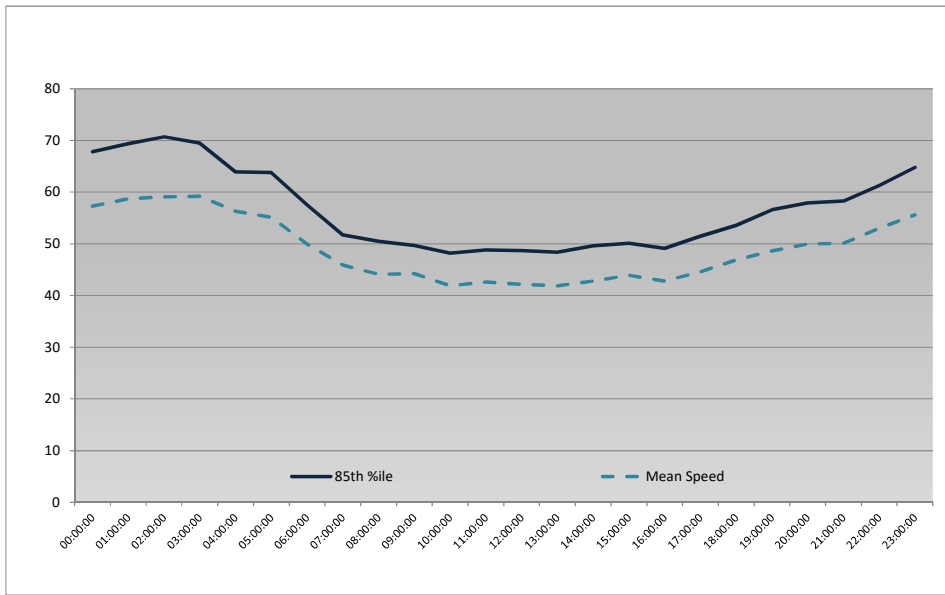


Southbound		
	7 day avg.	Weekday avg.
00:00:00	36	48
01:00:00	17	28
02:00:00	10	17
03:00:00	10	16
04:00:00	18	19
05:00:00	66	61
06:00:00	263	212
07:00:00	617	488
08:00:00	659	539
09:00:00	570	504
10:00:00	539	542
11:00:00	575	585
12:00:00	628	645
13:00:00	638	647
14:00:00	634	641
15:00:00	718	705
16:00:00	804	758
17:00:00	888	787
18:00:00	679	614
19:00:00	424	394
20:00:00	310	295
21:00:00	229	215
22:00:00	149	153
23:00:00	82	86

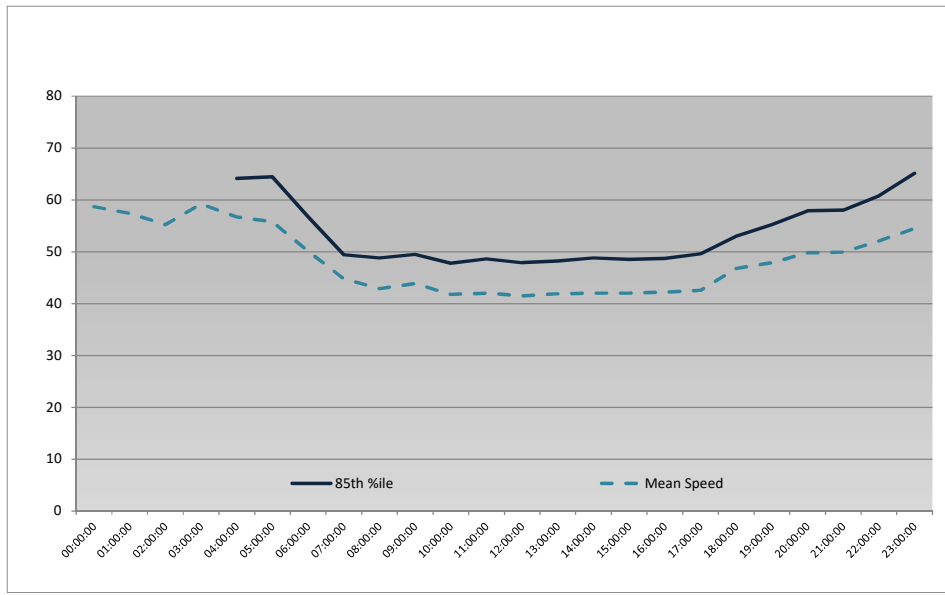


A354 - Portland Beach Road - Traffic speed survey - 8 May to 14 May 2017

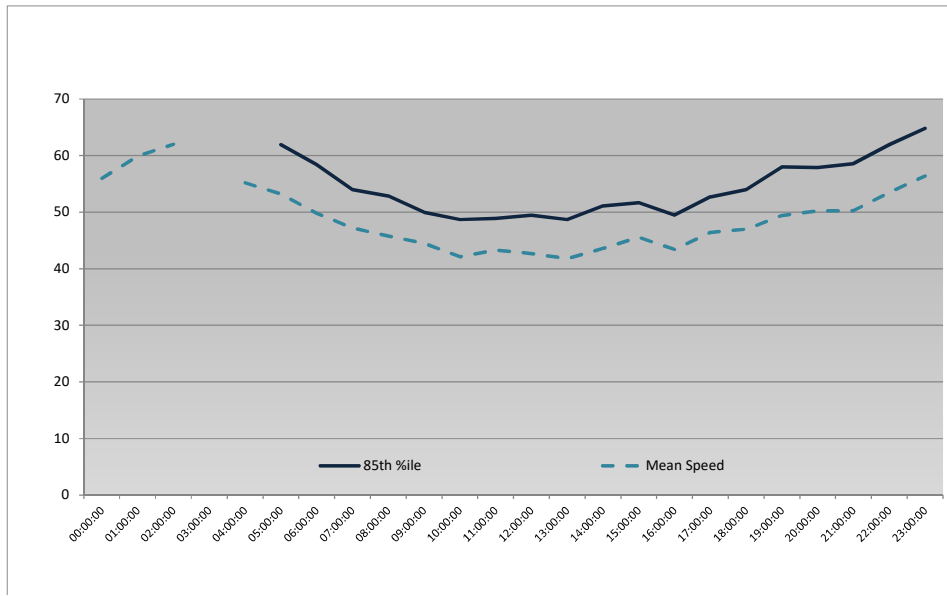
	All directions	
	85 th %ile	Mean Speed
00:00:00	67.8	57.3
01:00:00	69.4	58.7
02:00:00	70.7	59.1
03:00:00	69.5	59.2
04:00:00	63.9	56.3
05:00:00	63.8	55.1
06:00:00	57.6	50
07:00:00	51.7	45.9
08:00:00	50.5	44.1
09:00:00	49.7	44.2
10:00:00	48.2	41.9
11:00:00	48.8	42.6
12:00:00	48.7	42.2
13:00:00	48.4	41.9
14:00:00	49.6	42.8
15:00:00	50.1	43.9
16:00:00	49.1	42.8
17:00:00	51.5	44.6
18:00:00	53.6	46.9
19:00:00	56.6	48.6
20:00:00	57.9	50
21:00:00	58.3	50.1
22:00:00	61.3	53
23:00:00	64.8	55.6



	Northbound	
	85 th %ile	Mean Speed
00:00:00	71.5	58.7
01:00:00		57.4
02:00:00		55.2
03:00:00		59.2
04:00:00	64.1	56.7
05:00:00	64.4	55.8
06:00:00	56.7	50.1
07:00:00	49.4	44.8
08:00:00	48.8	42.9
09:00:00	49.5	43.9
10:00:00	47.8	41.8
11:00:00	48.6	42
12:00:00	47.9	41.5
13:00:00	48.2	41.9
14:00:00	48.8	42
15:00:00	48.5	42
16:00:00	48.7	42.2
17:00:00	49.6	42.6
18:00:00	53	46.8
19:00:00	55.2	47.9
20:00:00	57.9	49.8
21:00:00	58	49.9
22:00:00	60.8	52.1
23:00:00	65.1	54.5

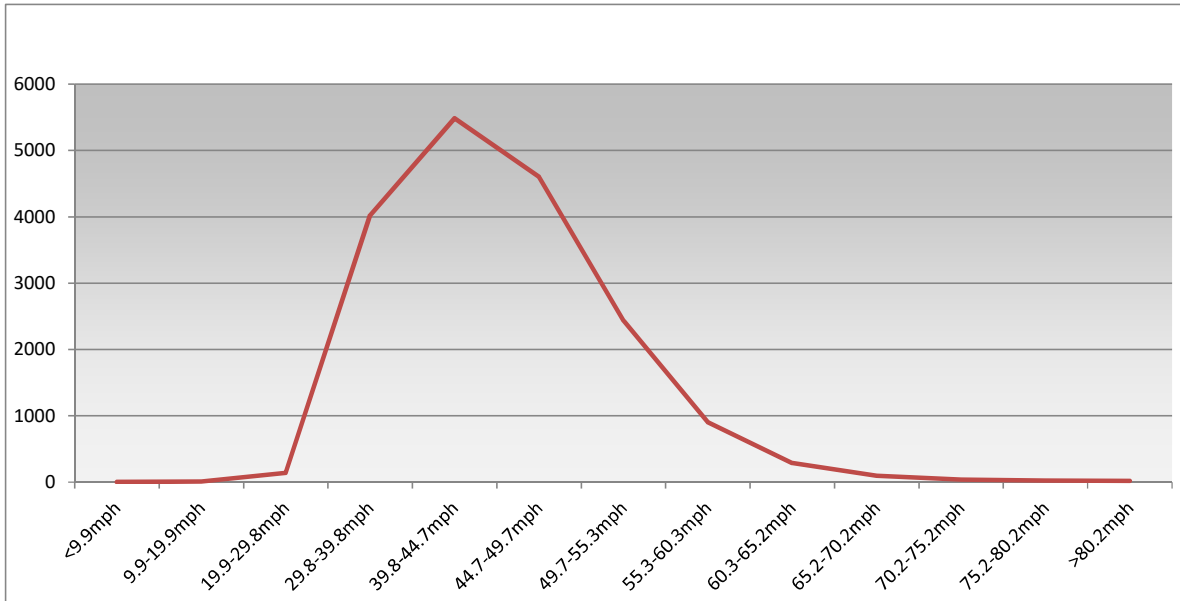


Southbound		
	85 th %ile	Mean Speed
00:00:00	65.6	56
01:00:00		59.9
02:00:00		62
03:00:00		
04:00:00		55.2
05:00:00	61.9	53.2
06:00:00	58.4	49.8
07:00:00	54	47.2
08:00:00	52.9	45.8
09:00:00	50	44.5
10:00:00	48.7	42.1
11:00:00	48.9	43.3
12:00:00	49.5	42.7
13:00:00	48.7	41.8
14:00:00	51.1	43.6
15:00:00	51.7	45.6
16:00:00	49.5	43.4
17:00:00	52.7	46.4
18:00:00	54	47
19:00:00	58	49.4
20:00:00	57.9	50.2
21:00:00	58.6	50.3
22:00:00	61.9	53.5
23:00:00	64.8	56.4



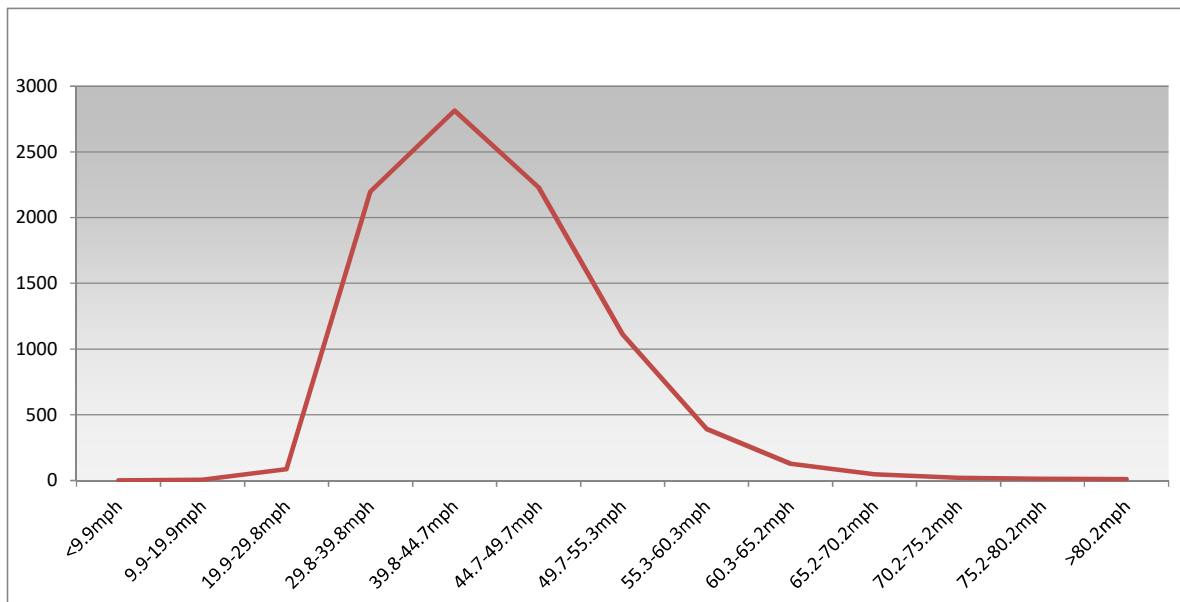
All Directions

<9.9mph	9.9-19.9mph	19.9-29.8mph	29.8-39.8mph	39.8-44.7mph	44.7-49.7mph	49.7-55.3mph	55.3-60.3mph	60.3-65.2mph	65.2-70.2mph	70.2-75.2mph	75.2-80.2mph	>80.2mph
2	8	138	4020	5485	4599	2435	904	286	95	39	22	20



Northbound

<9.9mph	9.9-19.9mph	19.9-29.8mph	29.8-39.8mph	39.8-44.7mph	44.7-49.7mph	49.7-55.3mph	55.3-60.3mph	60.3-65.2mph	65.2-70.2mph	70.2-75.2mph	75.2-80.2mph	>80.2mph
1	6	85	2197	2814	2232	1110	393	128	46	21	12	11



Southbound

<9.9mph	9.9-19.9mph	19.9-29.8mph	29.8-39.8mph	39.8-44.7mph	44.7-49.7mph	49.7-55.3mph	55.3-60.3mph	60.3-65.2mph	65.2-70.2mph	70.2-75.2mph	75.2-80.2mph	>80.2mph
2	1	54	1823	2671	2367	1325	511	159	49	18	9	9

